



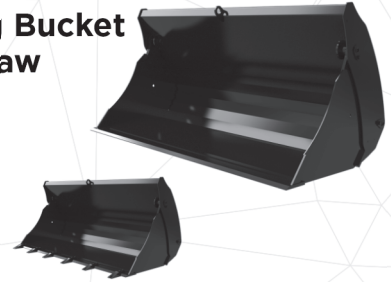
# ATTACHMENTS

- Standard Bucket
- Standard Claw Bucket



Width	Weight	Volume
140 cm	163 kg	0,50 m <sup>3</sup>
165 cm	183 kg	0,65 m <sup>3</sup>
185 cm	197 kg	0,72 m <sup>3</sup>
205 cm	212 kg	0,85 m <sup>3</sup>

- Bottom Opening Bucket
- Bottom Open Claw Bucket



Width	Weight	Volume
165 cm	292 kg	0,50 m <sup>3</sup>
185 cm	314 kg	0,65 m <sup>3</sup>
205 cm	340 kg	0,80 m <sup>3</sup>

- Grain Bucket



Width	Weight	Volume
190 cm	330 kg	1,50 m <sup>3</sup>
230 cm	360 kg	2 m <sup>3</sup>

- High Loading Bucket



Width	Weight	Volume
205 cm	480 kg	1,10 m <sup>3</sup>
225 cm	540 kg	1,30 m <sup>3</sup>

- Fork Bucket



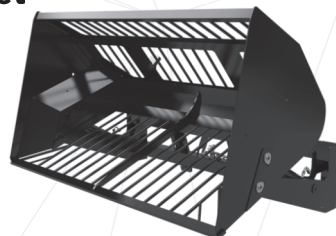
Width	Weight	Volume
185 cm	421 kg	0,75 m <sup>3</sup>
205 cm	467 kg	0,9 m <sup>3</sup>

- Crocodile Manure Fork



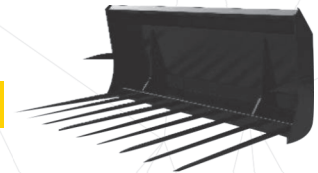
Width	Finger Pieces	Finger Length	Weight
180 cm	9	110 cm	324 kg
200 cm	10	110 cm	360 kg

- High Loading Beet Bucket



Width	Weight	Volume
140 cm	150 kg	0,50 m <sup>3</sup>
165 cm	170 kg	0,65 m <sup>3</sup>
185 cm	200 kg	0,72 m <sup>3</sup>
205 cm	250 kg	0,85 m <sup>3</sup>

- Manure Bucket



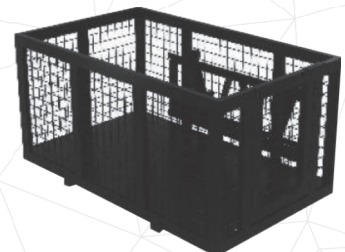
Width	Finger Pieces	Finger Length	Weight
180 cm	9	110 cm	196 kg
200 cm	10	110 cm	360 kg

- Lock Holder



Hook Span	155 cm
Lower Foot Length	90 cm
Width	120 cm
Weight	278 kg

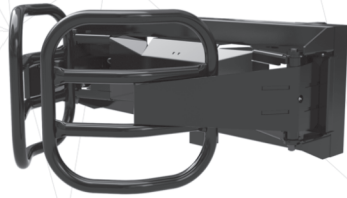
- Platform



Width	Weight	Height
190 cm	252 kg	1,00 m

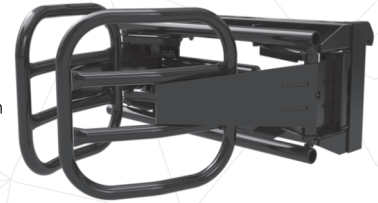
• **Roll Bale Holder RB-48**

**Clamping Diameter** 80 cm  
**Weight** 214 kg



• **Roll Bale Holder RB**

**Clamping Diameter** 80 - 120 cm  
**Weight** 223 kg



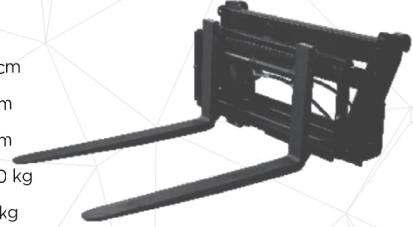
• **Forklift Attachment**

**Hook Opening** 140 cm  
**Lower Leg Length** 95 cm  
**Height** 62 cm  
**Capacity** 2000 kg  
**Weight** 170 kg



• **Forklift Attachment Fide Shift**

**Hook Opening** 140 cm  
**Lower Leg Length** 95 cm  
**Height** 62 cm  
**Capacity** 2000 kg  
**Weight** 220 kg



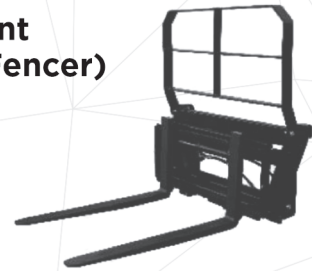
• **Forklift Attachment (With Fencer)**

**Hook Opening** 140 cm  
**Lower Leg Length** 95 cm  
**Height** 125 cm  
**Capacity** 2000 kg  
**Weight** 200 kg



• **Forklift Attachment Fide Shift (With Fencer)**

**Hook Opening** 140 cm  
**Lower Leg Length** 95 cm  
**Height** 125 cm  
**Capacity** 2000 kg  
**Weight** 250 kg



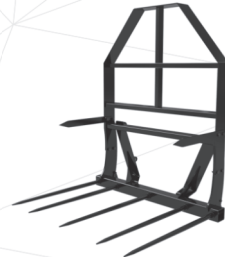
• **Bale Fork 3 Fingers**

**Skewer Length** 110 cm  
**Number of Skewers** 3  
**Width** 140 cm  
**Height** 170 cm  
**Weight** 153 kg



• **Bale Fork 5 Fingers**

**Skewer Length** 110 cm  
**Number of Skewers** 5  
**Width** 140 cm  
**Height** 170 cm  
**Weight** 169 kg



• **Big Bag 4 Forks**

**Max. Lifting** 1000 kg  
**Width** 140 cm  
**Height** 170 cm  
**Weight** 150 kg



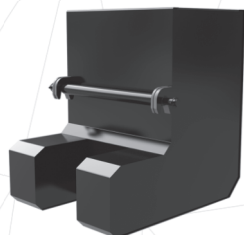
• **Single Hook Big Bag Fork**

**Max. Lifting** 1000 kg  
**Width** 140 cm  
**Height** 170 cm  
**Weight** 120 kg



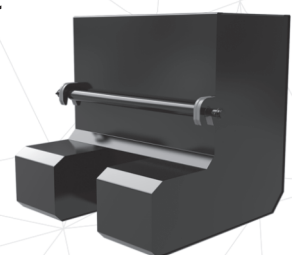
• **Portable Balance Weight 65**

**Curb Weight** 90 kg  
**Concrete Weight** 214 kg



• **Portable Balance Weight 85**

**Curb Weight** 106 kg  
**Concrete Weight** 850 kg



**BAGSAN**  
Heavy Machinery and Attachment

www.bagsanglobal.com

+90 544 409 98 11

